

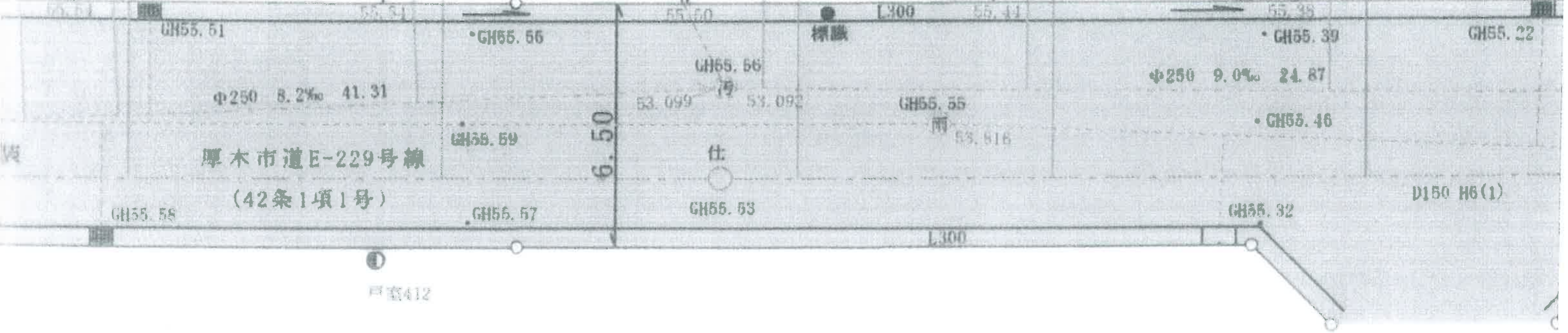
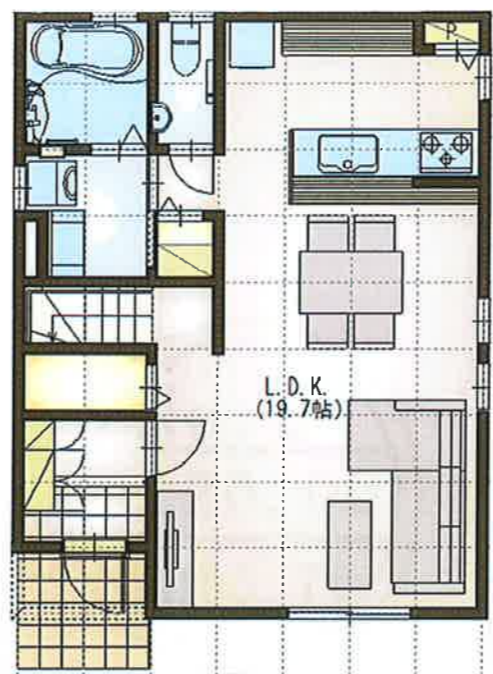


No. 32
120.00
FH55.80

No. 33
120.00
FH55.80

No. 35
120.00
FH55.70

No. 36
120.00
FH55.60



厚木市道E-229号線
(42条1項1号)

戸室412

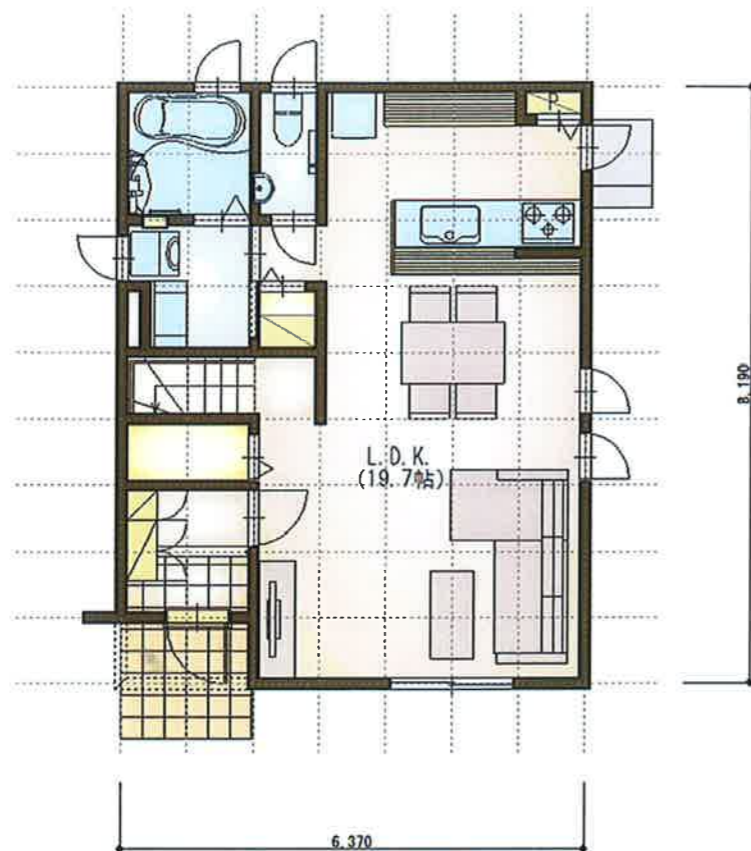
φ250 8.2‰ 41.31

φ250 9.0‰ 24.87

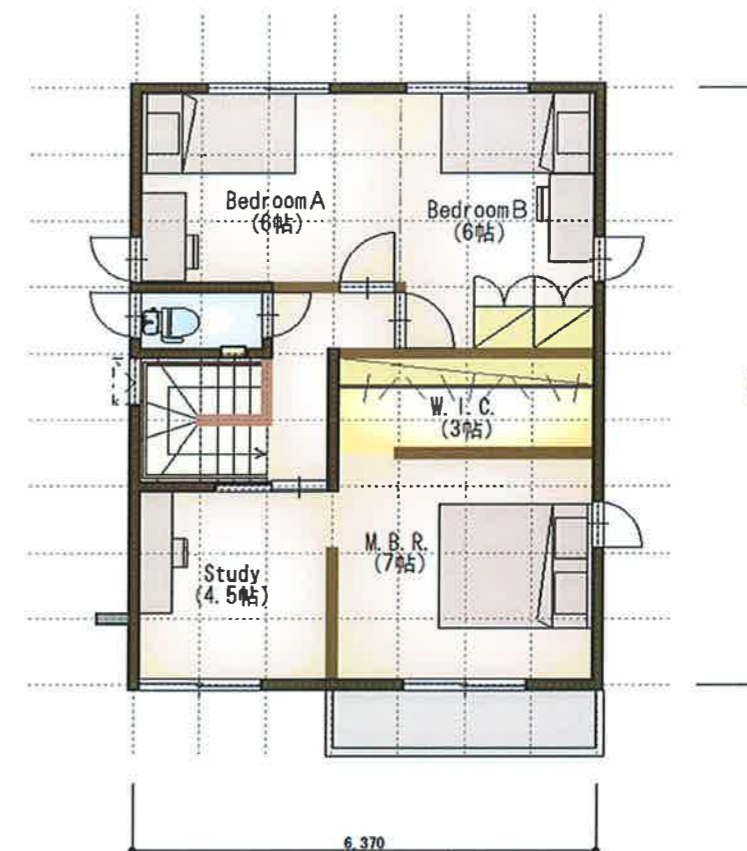
6.50

標識

D150 H6(1)



1F



2F



FS(041)S-3545-5

延床面積 102.68 m² (31.05 坪)
 建築面積 52.17 m² (15.78 坪)
 1階床面積 50.51 m² (15.27 坪)
 2階床面積 52.17 m² (15.78 坪)

施工面積 104.34 m² (31.56 坪)
 直下率 84.14 %

Forest selection BF