



FOREST SELECTION BF

PLAN NUMBER

FS(1217)N-3552-1

DETAIL

建築面積 60.86 m² (18.41 坪)

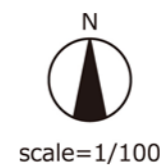
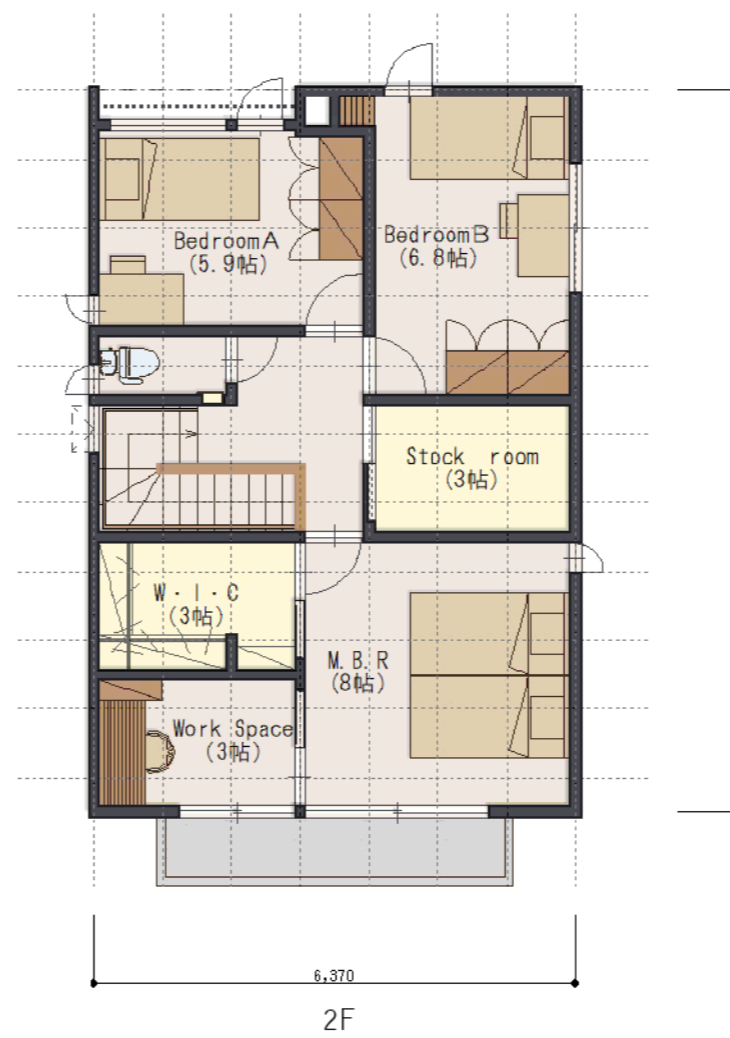
1階床面積 57.13 m² (17.28 坪)

2階床面積 59.62 m² (18.03 坪)

延床面積 116.75 m² (35.31 坪)

施工面積 120.48 m² (36.44 坪)

容積対象延床面積 116.75 m²



| GRID | | |
|-------|--------|----------|
| 910mm | 910mm | 1820mm |
| 910mm | 1820mm | 1820mm |
| | 1帖 | 1坪(3.3㎡) |

SUMITOMO FORESTRY