

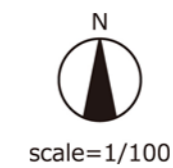
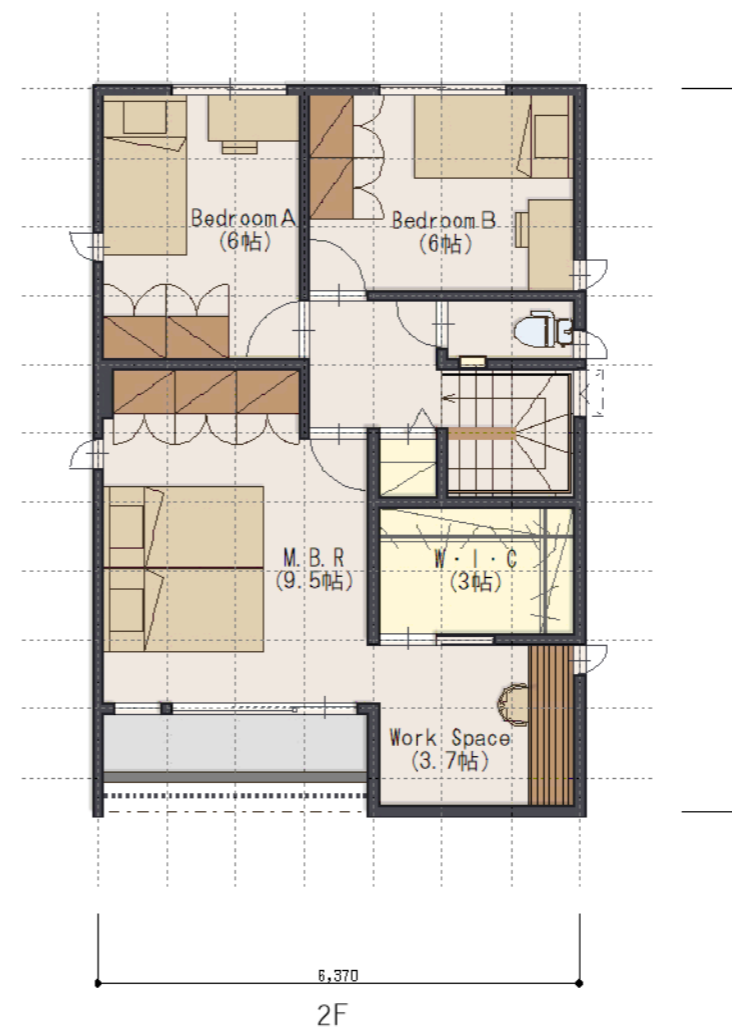
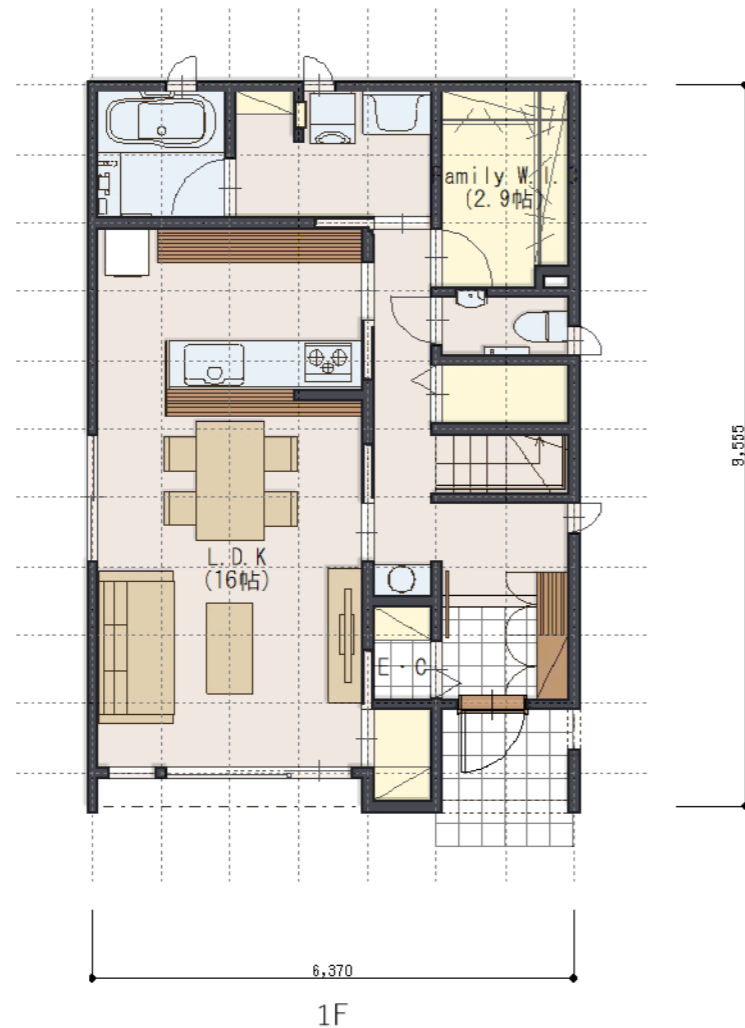


**FOREST SELECTION BF**

PLAN NUMBER  
**FS(1203)S-3552-3**

**DETAIL**

建築面積 60.86 m<sup>2</sup> ( 18.41 坪)  
 1階床面積 56.72 m<sup>2</sup> ( 17.15 坪)  
 2階床面積 55.89 m<sup>2</sup> ( 16.90 坪)  
 延床面積 112.61 m<sup>2</sup> ( 34.05 坪)  
 防水ハコ工面面積 3.31 m<sup>2</sup> ( 1.00 坪)  
 施工面積 120.06 m<sup>2</sup> ( 36.31 坪)  
 容積対象延床面積 112.61 m<sup>2</sup>



GRID			
	910mm	910mm	1820mm
910mm	1820mm	1帖	1坪(3.3m <sup>2</sup> )

**SUMITOMO FORESTRY**